

REVIEWED FOR
General Electric International, Inc.
 Dominion Energy/Dresden Energy, LLC
 Dresden Energy Facility

PROJECT NO. 11038-000

SARGENT & LUNDY, LLC

1. X NO EXCEPTION TAKEN, CONTRACTOR
 MAY PROCEED WITH FABRICATION
 OR CONSTRUCTION.

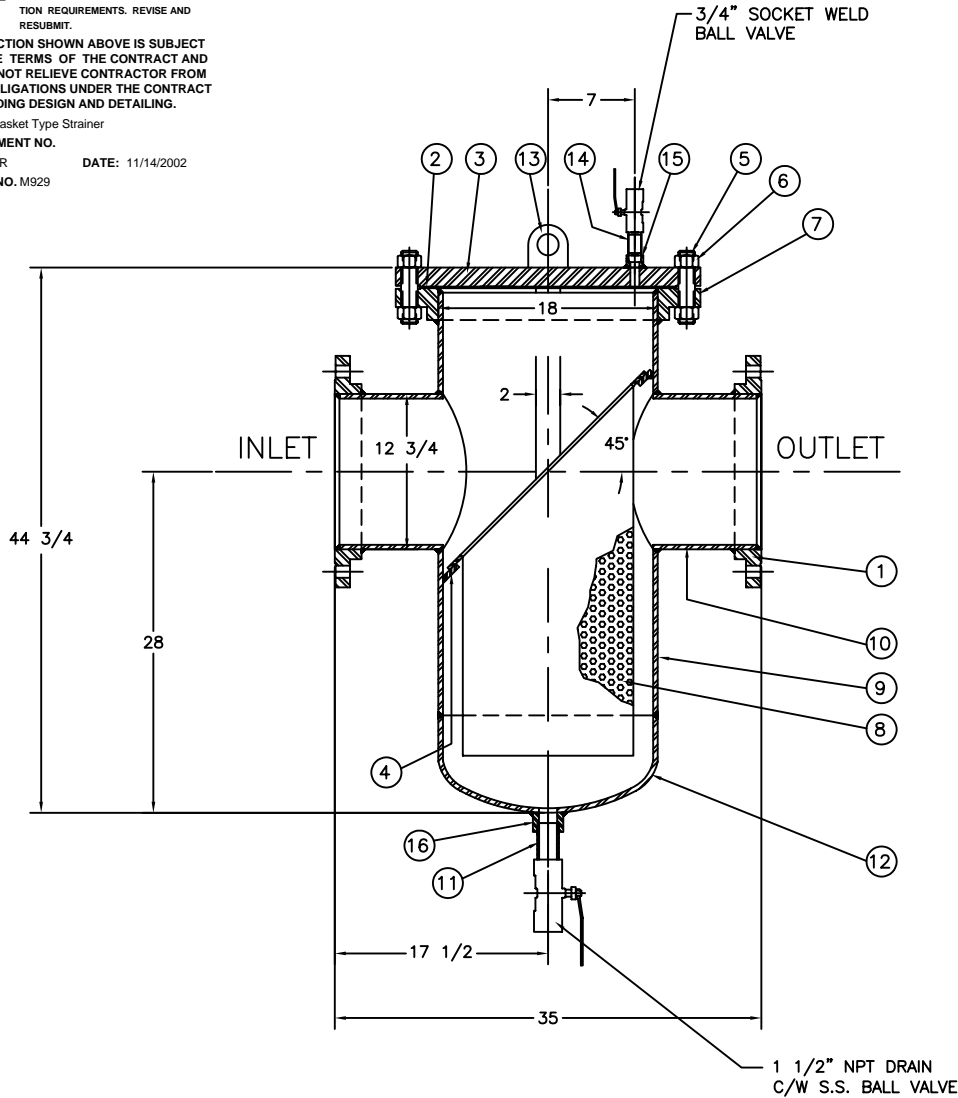
2. REVISE AS NOTED AND RESUBMIT
 CONTRACTOR CAN PROCEED BASED
 ON MAKING REVISIONS NOTED.

3. RESULTS DO NOT MEET SPECIFICA-
 TION REQUIREMENTS. REVISE AND
 RESUBMIT.

ANY ACTION SHOWN ABOVE IS SUBJECT
 TO THE TERMS OF THE CONTRACT AND
 DOES NOT RELIEVE CONTRACTOR FROM
 HIS OBLIGATIONS UNDER THE CONTRACT
 INCLUDING DESIGN AND DETAILING.

FOR: Basket Type Strainer
 EQUIPMENT NO.

BY: TNR DATE: 11/14/2002
 SPEC NO. M929



| PARTS LIST | | | |
|------------|---------------------|---|------|
| ITEM | DESCRIPTION | SPECIFICATIONS | QTY. |
| 1 | INLET/OUTLET FLANGE | 12" 150 LB. R.F. C.STEEL ASME SA105 SLIP-ON FLANGE | 2 |
| 2 | COVER GASKET | 18" 150 LB. FLEXITALLIC 304 SS | 1 |
| 3 | COVER FLANGE | 18" 150 LB. R.F. C.STEEL ASME SA105 BLIND FLANGE | 1 |
| 4 | BODY RING | 3/8" THK. C.STEEL ASME SA36 | 1 |
| 5 | COVER STUDS | 1 1/8" X 6" LG. C.STEEL ASME SA193 B7 | 16 |
| 6 | COVER NUTS | 1 1/8" C.STEEL ASME SA194 2H | 32 |
| 7 | BODY FLANGE | 18" 150 LB. R.F. C.STEEL ASME SA105 SLIP-ON FLANGE | 1 |
| 8 | BASKET ASSEMBLY | 18 GA. 1/16" PERF. C/W 60 MESH - TYPE 316 SS 14" X 30 5/16" LG. | 1 |
| 9 | BODY PIPE | 18" SCHED.STD. C.STEEL PIPE ASME SA106-B X 34 11/16" LG. | 1 |
| 10 | INLET/OUTLET PIPE | 12" SCHED.STD. C.STEEL PIPE ASME SA106-B X 11 5/16" LG. | 2 |
| 11 | DRAIN | 1 1/2" NPT DRAIN C/W SS BALL VALVE X 3 1/2" LG. NIPPLE | 1 |
| 12 | BOTTOM CAP | 18" SCHED.STD. C.STEEL ASME SA234-WPB WELD CAP | 1 |
| 13 | LIFTING LUG | C.STEEL ASME SA36 | 1 |
| 14 | VENT BALL VALVE | 3/4" SS BALL VALVE WITH SOCKET WELD OUTLET X 3" LG. NIPPLE | 1 |
| 15 | VENT COUPLING | 3/4" 3000 LB. C.STEEL ASME SA105 SOCKET WELD COUPLING | 1 |
| 16 | DRAIN COUPLING | 1 1/2" 3000 LB. C.STEEL ASME SA105 HALF COUPLING | 1 |

PRESSURE DROP (CLEAN) - 0.7 PSIG
 50% CLOGGED - 2 PSIG

PROJECT: DRESDEN ENERGY FACILITY
 PPE PROJECT # 510X0027
 MDL - M929
 SIN No: 025GBA
 DESIGN FLOW - 1800 GPM
 SPEC. NO. 370A3925SM929 REV.D AC

CERTIFIED BY:
SSI EQUIPMENT INC.
W MWP 200 PSIG AT 350°F
MDMT -20°F AT 200 PSIG
SERIAL NO. 22-6567 1 TO 4
CRN.
QIN.
YEAR BUILT: 2002
MODEL: 150BFSBW1
SIZE 12" ANSI 150 LB.
TAG:

- GENERAL NOTE'S**
- FLANGE BOLT HOLES STRADDLE NORMAL UNLESS NOTED.
 - ALL DIMENSIONS ARE IN INCHES UNLESS NOTED.
 - SPARE PARTS ITEM 2 AND 8
 - 5" X 4" NAMEPLATE LOCATED IN FRONT OF STRAINER.
 - 1/16" PERF. C/W 60 MESH FOR START-UP. (18 GAUGE)
 - 1/16" PERF. C/W 20 MESH FOR CONTINUOUS DUTY.(18 GAUGE)
 - STRAINER TO BE COAL TAR EPOXY LINED AS FOLLOWS:
 - CLEAN AND DEGREASE IN ACCORDANCE WITH SSPC STD. SP-1, SOLVENT WASH FINISH.
 - MASK INLET AND OUTLET OPENINGS, AND IDENTIFICATION TAGS ETC.
 - DRY-ABRASIVE BLAST CLEAN IN ACCORDANCE WITH SSPC STD. SP-10 NEAR-WHITE METAL FINISH.
 - TO APPLY TWO OR THREE COATS OF SHERWIN-WILLIAMS TARGUARD B69B60/B69V60, TWO COMPONENT HIGH BUILD POLYAMIDE CURED COAL TAR EPOXY, AT A RATE TO ACHIEVE A DRY FILM THICKNESS OF 14 TO 18 MILS.
 - SPARES ITEMS 2, 8, 5 & 6.

| REV | DATE | BY | REVISION DESCRIPTION |
|-----|---------|------|--|
| 2 | OCT/02 | L.F. | REVISED PER CUSTOMER COMMENTS |
| 1 | SEPT/02 | L.F. | REVISED SPEC. NO. BY CUSTOMER FOR APPROVAL |

This drawing is the property of SSI EQUIPMENT INC. and is subject to return upon request. It shall not be copied or duplicated in any manner and shall not be submitted to outside parties for examination without the consent of SSI EQUIPMENT INC. It shall be used for reference to work under contract or proposals submitted by SSI EQUIPMENT INC. only.

| DESIGN SPECIFICATIONS | | | | CONSTRUCTION DATA | | | | TOLERANCES | | SSI WORK ORDER: | | |
|---------------------------|-------------------------------------|-------------------------------|---------------------|----------------------|-------------------|----------------------|----------------------|----------------------------|---------|-----------------|---|--------------------------|
| DESIGN CODE: | ASME SECTION VIII, DIV.1, 2001 Ed., | INTERNAL CORROSION ALLOWANCE: | NIL | WPS UTILIZED: | SSI-001, SSI-006 | INLET/OUTLET: | 12" ANSI 150 LB. R.F | FRACTIONAL | ± 1/8" | 22-6567 | | |
| PIPING CODE: | ASME B31.1 | EXTERNAL CORROSION ALLOWANCE: | NIL | CRN | N/A | DRAIN: | 1 1/2" N.P.T. | ANGULAR | ± 1" | MODEL: | | |
| CODE STAMP: | NO | M.D.M.T. : | -20°F | TOTAL WEIGHT (EMPTY) | 1205 LBS | VENT: | 3/4" SOCKET WELD | X.X | ± .1" | 150BFSBW1 | | |
| INTERNAL DESIGN PRESSURE: | 200 psig AT 350°F | HYDROSTATIC TEST: | 260 psig FOR 5 MIN. | TOTAL WEIGHT (FULL) | N/A | DIFFERENTIALS: | N/A | X.XX | ± .03" | SIZE: | BURLINGTON-ONTARIO-CANADA / BUFFALO-N.Y.-U.S.A. | |
| EXTERNAL DESIGN PRESSURE: | 0 psig AT 100°F | N.D.E. REQUIREMENTS: | N/A | EST. CAPACITY: | N/A | FILTRATION LEVEL: | SEE NOTE #5 | X.XXX | ± .015" | 12" X 18" | DESIGNED : N.S. | |
| SEISMIC CODE: | N/A | HEAT TREATMENTS: | NONE | INTERNAL FINISH | RUST PREVENTATIVE | FILTRATION AREA: | 1488 SQ.IN | UNLESS OTHERWISE SPECIFIED | | 1 5 | APPROVED : N.S. | |
| WIND CODE: | NONE (WEIGHT ONLY) | SERVICE TYPE: | NON LETHAL | EXTERNAL FINISH | SEE NOTE #6 | OPEN AREA/PIPE AREA: | 4.6:1 | | | DATE : SEP/02 | DRAWING DESCRIPTION | |
| | | | | | | | | | | | 1 2 | BASKET STRAINER ASSEMBLY |